

EC2000 ENGINE CRANE

OWNER'S MANUAL

2 TONNE MAX CAPACITY



FOR YOUR SAFETY
PLEASE READ THESE INSTRUCTIONS CAREFULLY
AND RETAIN THEM FOR FUTURE USE.



WARNING

Do not overload. Overloading could cause damage or failure of the crane. Never exceed the safe working loads indicated on the jib.

Never use the crane on an uneven floor surface as this could result in the crane tipping over.

Always lock the legs and jib in position before lifting a load.

The nuts and bolts supplied with the crane are all high strength and should not be substituted for inferior types. Before each use ensure that all nuts and bolts are correctly fitted and tight.

WARNING: This double pump long ram is designed for lifting purposes only – not for supporting loads. Do not load beyond its rated capacity.

IMPORTANT: It is possible that air has got into the hydraulic system causing poor lifting performance. Purge any air from the system by fully opening the release valve (turn handle counter-clockwise) then while holding the boom down operate the pump handle rapidly several times.

Note: Before raising the legs to the storage position bolts must be inserted into the base support and tightened each time. If this procedure is not followed the unit may fall over.

MAINTENANCE

IMPORTANT: When adding or replacing oil always use high grade hydraulic jack oil. Avoid mixing different grades/types of oil. Do not use brake fluid, alcohol, glycerine, detergent motor oil or dirty oil. Improper fluid can cause serious internal damage to the ram.

When adding oil be very careful not to permit dirt or foreign matter to enter the system. Check ram and plunger every 3 months for any signs of rust or corrosion. Clean as needed and wipe with an oily cloth.

When not using the ram always leave the jib in the fully lowered position.

SPECIFICATION

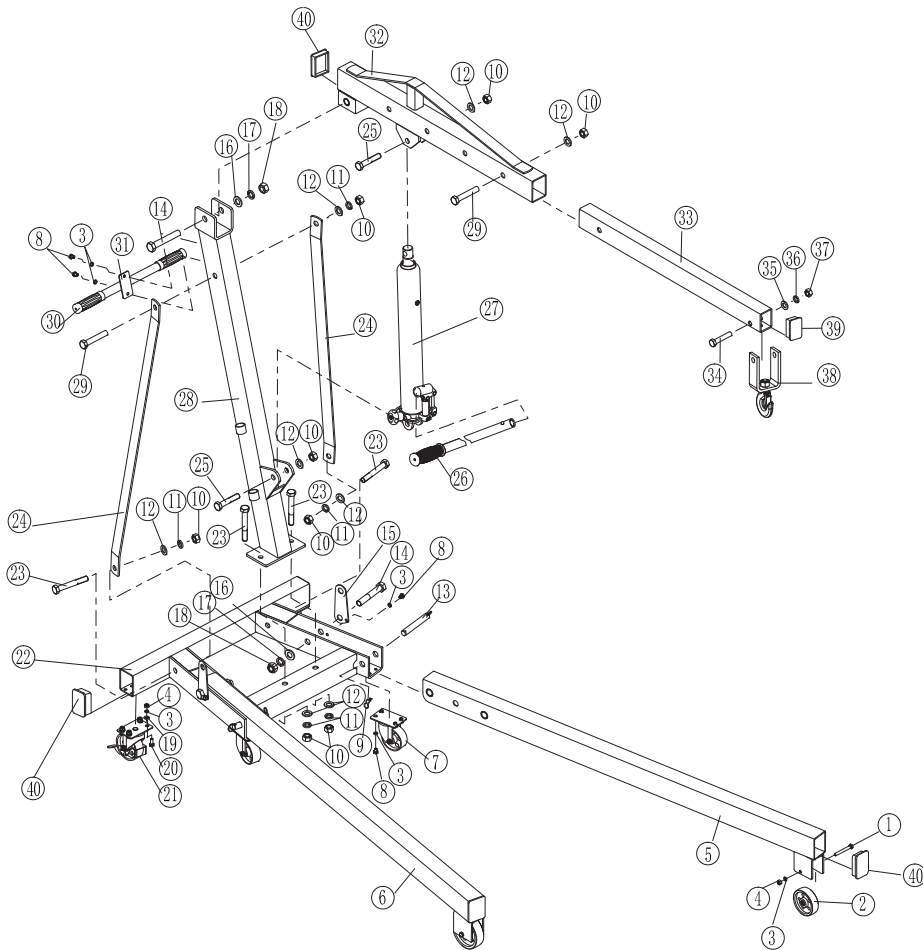
Lifting capacity position 1	2000kg
Lifting capacity position 2	1500kg
Lifting capacity position 3	1000kg
Lifting capacity position 4	500kg
Maximum lifting height min. jib ext.	1860mm
Maximum lifting height max. jib ext.	2240mm
Length of jib position 1	950mm
Length of jib position 2	1120mm
Length of jib position 3	1290mm
Length of jib position 4	1460mm
Height of frame	200mm
Length of frame	1710mm
Overall height	1490mm
Width of frame max	1005mm
Distance between centre of rear wheels	655mm

OPERATING INSTRUCTIONS

TO RAISE LOAD: Close release valve by turning handle clockwise to a snug-tight position. Do not over-tighten.

TO LOWER LOAD: Open release valve by turning handle counter-clockwise very slowly. The speed of the lowering is controlled by how much the handle is turned.

ASSEMBLY DIAGRAM



PARTS LIST

ITEM	DESCRIPTION	QTY	ITEM	DESCRIPTION	QTY
1	Bolt M8 x 65	2	21	3" Castor For Rear	2
2	Wheel	2	22	Base Assembly	1
3	Spring Washer 8	22	23	Bolt M16 x 110	4
4	Nut M8	10	24	Support	2
5	Left Leg	1	25	Bolt M16 x 80	2
6	Right Leg	1	26	Jack Handle	1
7	3" Castor For Centre	2	27	Jack	1
8	Bolt M8 x 10	12	28	Post	1
9	R-Pin	2	29	Bolt M16 x 90	2
10	Nut M16	8	30	Handle Cover	2
11	Spring Washer 16	5	31	Handle	1
12	Washer 16	8	32	Jib	1
13	Ring Pin	2	33	Jib Extension	1
14	Bolt M18 x 110	3	34	Bolt M14 x 100	1
15	Pin Plate	2	35	Washer 14	1
16	Washer 18	3	36	Spring Washer 14	1
17	Spring Washer 18	3	37	Nut M14	1
18	Nut M18	3	38	Hook and Bracket	1
19	Washer 8	8	39	Jib End Cap	1
20	Bolt M8 x 20	8	40	Base Leg Cap	5



SGS Engineering (UK) Ltd
 Unit 1, West Side Park
 Raynesway
 Derby, DE21 7AZ

TROUBLE SHOOTING

TROUBLE	PROBABLE CAUSE	REMEDY
Will not hold load.	Dirt on valve seats.	<ol style="list-style-type: none"> Lower lifting boom. Close the release valve and remove oil filler plug. Place one foot on the leg and pull up the lifting boom to its full height by hand. Open the release valve to lower the lifting boom. Replace worn seals.
Will not lift load. Will not lift to its full height. Pump feels unsteady under load. Pump will not lower completely.	Air block.	<ol style="list-style-type: none"> Open the release valve and remove oil filler plug. Pump handle a couple of full strokes and close the release valve.
Pump will not lift to its full height. Pump feels unsteady under load.	The reservoir could be over-filled. Low hydraulic oil level.	Check the oil level. Remove the filler plug. Top up oil to correct level.
Pump feels unsteady under load.	The cup seal could be worn out.	Replace cup seal.
Will not lower completely.	Air block. Unit requires lubrication.	Release air from the hydraulic pump by removing filler plug. Oil external moving parts.

FOR YOUR SAFETY
 PLEASE READ THESE INSTRUCTIONS CAREFULLY
 AND RETAIN THEM FOR FUTURE USE.



EC Declaration of Conformity

This is an important document and should be retained

MANUFACTURER'S NAME: SGS Engineering (UK) Ltd

TYPE OF EQUIPMENT: Engine Crane

PART NUMBER: EC2000

APPLICATION OF EC COUNCIL DIRECTIVES / STANDARD:

EN 1494:2000+A1:2008 Mobile or moveable lifting equipment
 EN ISO 12100:2010 Risk assessment & risk reduction
 EN ISO 13857:2008 Safety distances & hazard zone
 EN 349:1993+A1:2008 Minimum safety gaps

I, the undersigned, hereby declare that the equipment specified above conforms to the above European Communities Directive(s) and Standard(s).

PLACE: Derby, UK

DATE: 5th JULY 2023

(Signature)
 Neil Sansom
 Company CEO

